

FSF serial oil flow switches are mainly used to monitor and control the flow of the medium in pipes and directly get signals from the flow of medium. widely used in foodstuff industry, water-cooled air-condition, petroleum and petrification, etc.

Technicals:

Working voltage: AC 220V

Power: 8W

Ambient temperature: -20°C ~ 80°C

Fluid temperature: -20°C ~ 110°C

Max. Fluid pressure: 2.5MPa

Level of protection: IP55

① ● Ground terminal



①-② is disconnected when the system is in shutdown

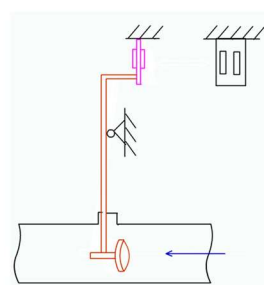
①-② is connected when flow rate is bigger than setting value

①-② is disconnected when flow rate is lower than setting value

Model	DN(mm)	connection size (inch)	Flow rate range (L/min)		Medium	Materials in contact with the medium
			Increase Flow	Decrease Flow		
FSF10-Rc3/8	φ10	Rc3/8"	2.4~2.9	2.1~2.6	R134a, R22. R407C,R404A/507, water and oil	Brass
FSF10S-3/8		3/8"ODF				
FSF10S-1/2		1/2"ODF				
FSF15-Rc1/2	φ15	Rc 1/2"	3.3~4.0	2.9~3.7	R134a, R22. R407C,R404A/507, water and oil	Brass
FSF15S-5/8		5/8"ODF				
FSF20-G3/4	φ20	G3/4	6.6~8.8	6.2~7.7		
FSF20S-1-1/8		1-1/8"ODF				
FSF20S-7/8		7/8"ODF				
FSF20S-3/4		3/4"ODF				
FSF20S-1-1/8A	φ20	1-1/8"ODF	6.6~8.8	6.2~7.7	R717(ammonia)system	Stainless Steel
FSF25S-1-1/8	φ25	1-1/8"ODF	13.0~16.1	11.4~14.7	R134a, R22. R407C,R404A/507, water and oil	Brass



FSF25S - 1-1/8



FSF20-G3/4

